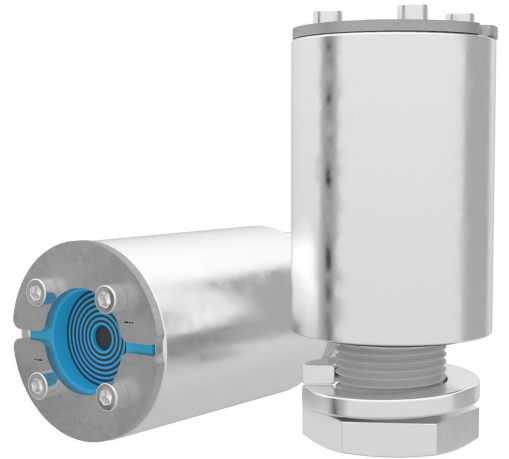




Roxtec RS seal with SLA

Cable seal with adaption sleeve for attachment in drilled holes.

The Roxtec RS with SLA is a seal with metal sleeve for single cables. The entry seal has two halves with removable layers making it adaptable to cables of different sizes. The sleeve is threaded and is attached to the structure with a counter nut.



- Area efficient
- Perfect for retrofit
- Quick and easy to install

Product characteristics



Fire rated



Watertight

Structure of installation



Metal

Mounting type



Bolting

Ratings & certificates

Fire

- A-CLASS according to IMO 2010 FTP Code

Tightness

- Water: 2.5 bar (catastrophic)

Sealing components

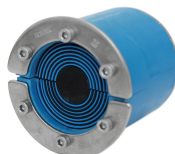
Sealing components



Lubricant



SLA RS kit











RS seal

For detailed information, please visit [roxtec.com](https://www.roxtec.com).

Pre-configured transit kits

in/lbs

							
SLA RS 100 AISI316	SLA RS 50 AISI316	SLA RS 50 GALV	SLA RS 100 GALV	SLA RS 25 GALV	SLA RS 75 GALV	SLA RS 75 AISI316	SLA RS 25 AISI316
Product	Configuration		Aperture dimensions		Weight		Art. no
SLA RS 100 AISI316	1x (1.890-2.087)		Ø 3.15 - 3.346		6.4		164404
SLA RS 50 AISI316	1x (0.315-0.984)		1.339 - 1.575		2.5		164388
SLA RS 50 GALV	1x (0.315-0.984)		1.339 - 1.575		2.4		164389
SLA RS 100 GALV	1x (1.890-2.087)		3.15 - 3.346		6.4		164405
SLA RS 25 GALV	1x (0.142-0.472)		0.827 - 0.866		0.62		164387
SLA RS 75 GALV	1x (0.945-1.339)		1.654 - 1.929		4		164397
SLA RS 75 AISI316	1x (0.945-1.339)		1.654 - 1.929		4.1		164396
SLA RS 25 AISI316	1x (0.142-0.472)		0.827 - 0.866		0.62		164386

The product information provided by Roxtec does not release the purchaser of the Roxtec system, or part thereof, from the obligation to independently determine the suitability of the products for the intended process, installation and/or use.

Roxtec gives no guarantee for the Roxtec system or any part thereof and assumes no liability for any loss or damage whatsoever, whether direct, indirect, consequential, loss of profit or otherwise, occurred or caused by the Roxtec systems or installations containing components not manufactured by an authorized manufacturer and/or occurred or caused by the use of the Roxtec system in a manner or for an application other than for which the Roxtec system was designed or intended.

Roxtec expressly excludes any implied warranties of merchantability and fitness for a particular purpose and all other express or implied representations and warranties provided by statute or common law. User determines suitability of the Roxtec system for intended use and assumes all risk and liability in connection therewith. In no event shall Roxtec be liable for indirect, consequential, punitive, special, exemplary or incidental damages or losses.

The Roxtec products are offered and sold in accordance with the conditions of the Roxtec General Terms of Sales. The latest version of the Roxtec General Terms of Sales can be downloaded from <https://www.roxtec.com/en/about-us/about-roxtec/general-terms-of-sales/>

We reserve the right to make changes to the product and technical information without further notice. Any errors in print or entry are no claims for indemnity. The content of this publication is the property of Roxtec International AB and is protected by copyright.

This document was generated on: 2024-04-27